

STUDENT WORKBOOK

for

SHATNEZ



INTRODUCTION

1 Circle the two types of fabric that may not be worn together.



- 1 Silk
- 2 Polyester
- 3 Linen
- 4 Cotton
- 5 Nylon
- 6 Lycra
- 7 Hemp
- 8 Wool

2 Which animal does wool come from?



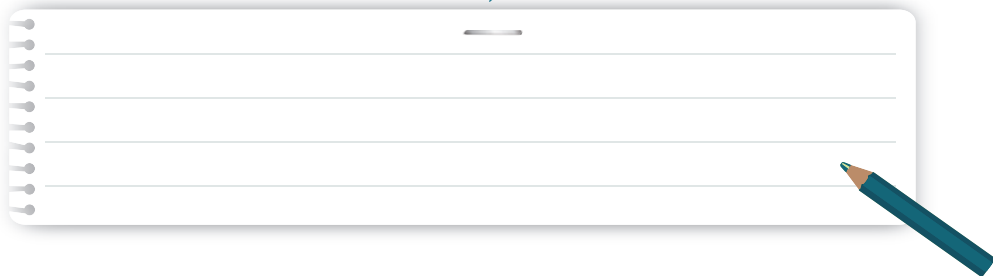
3 Where does linen come from?



INTRODUCTION

4 Our Rabbis teach us that angels bring our tefillos, prayers, before Hashem. What do the crowns on top of each letter of the the word teach us?

שַׁטְנֵז



5 Shatnez is a chok, a commandment without any logical explanation. We don't understand it, but are careful to keep it out deep _____ of Hashem.

6 When you buy a new garment, before wearing it, how can you be sure that it is shatnez free?



7 What was the name of the man who was so committed to the mitzvah of shatnez that he made it his life's goal?

- Yoselle Rosenblatt
- Mike Tress
- Yosef Rosenberger
- Alex Levy

SHATNEZ CHECKER

8 When reading a label of a garment, what clues should you look for that the garment may contain shatnez?



9



The shatnez checker knows that even the smallest amount of _____ in a wool garment will make the garment shatnez and _____ to wear.

10

Circle the place in the suit jacket that a Shatnez checker will check:



SHATNEZ CHECKER

11

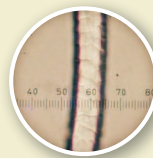
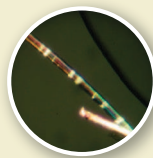
If the Shatnez checker needs more information about what a particular thread is, which tool will he use?



12

Match the fiber to its magnified image.

WOOL
LINEN



13

If the Shatnez checker finds that one of the buttons on a wool suit had been sewn on with linen thread, what can be done to make the suit wearable?



14



If the Shatnez checker finds linen in the collar of a wool suit what can be done to make the suit wearable?

WHEN TO HAVE A GARMENT CHECKED

The Cohen family has just learned about the mitzvah of shatnez. Help them decide which garments need to be brought to the Shatnez Lab to be checked.

Circle the correct answer:

15 IMMA COHEN'S LINEN SWEATER.

- Needs to be checked
- Doesn't need to be checked



16 ABBA COHEN'S WOOL SUIT.

- Needs to be checked
- Doesn't need to be checked



17 THE COHEN SON'S POLYESTER TIE.

- Needs to be checked
- Doesn't need to be checked



WHEN TO HAVE A GARMENT CHECKED

18 THE COHEN DAUGHTER'S WOOL SKIRT.

- Needs to be checked
- Doesn't need to be checked



19 THE COHEN DAUGHTER'S SLIPPERS THAT SAY "MIXED FIBERS" ON THE LABEL.

- Needs to be checked
- Doesn't need to be checked



20 IMMA COHEN'S SKIRT THAT HAS A MULTI-COLORED TEXTURE.

- Needs to be checked
- Doesn't need to be checked



